



# airVision™

IP Camera/NVR Management System

Camera Models: airCam, airCam Dome, airCam Mini

Camera/NVR Management Software

Versatile Camera Settings

Detailed Statistic Reporting

Advanced Analytics



# airCam Cameras

## Breakthrough Price/ Performance IP Camera Product Line

The AirCam line of H.264 megapixel cameras combine advanced industrial design, powerful performance with market leading cost-effectiveness. There are a variety of cameras to choose from for optimizing application specific deployments.

### airCam

- Wall Mount/Ceiling Mount
- 30 FPS
- 1MP/HDTV 720p
- 4.0mm / F1.5
- Powered through Ethernet

Available in single-pack and 3-pack.

### airCam Dome

- Built-in Microphone
- Ceiling Mount
- 30 FPS
- 1MP/HDTV 720p
- 4.0mm / F1.5
- Powered through Ethernet

Available in single-pack and 3-pack.

### airCam Mini

- Built-in Microphone
- Desktop Mount
- 30 FPS
- 1MP/HDTV 720p
- 3.6mm / F2.5
- Powered through Ethernet

Available in single-pack.

All models include:

- Power over Ethernet Adapter
- airVision Software Installation CD



# airVision Software

## Next Generation H.264 IP Camera and NVR Management System

AirVision™ provides advanced recording capabilities and powerful analytics with a breakthrough web-based user interface. Combined with Ubiquiti's powerful line of H.264 megapixel airCam IP cameras, airVision is a revolutionary price/performance IP video surveillance system.

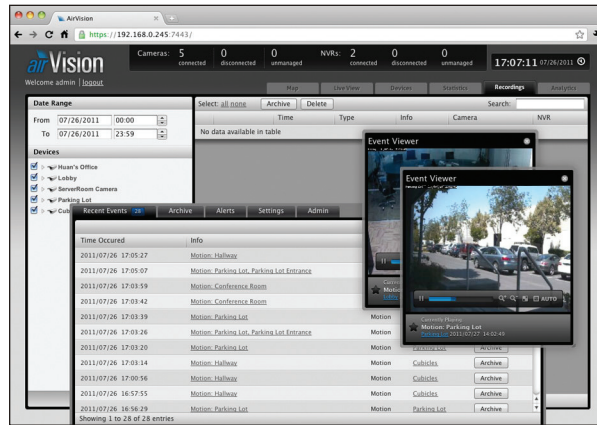
### Features

**Feature Packed User Interface** Accessible from any web browser, airVision's user interface was designed to be easy to use yet packed with advanced features. Once the airVision NVR Server package (included) is installed on any computer with Windows or Linux, the administrator can remotely access the powerful airVision Controller user interface through any web browser. AirVision's user interface is incredibly intuitive and loaded with powerful features such as detailed statistical reporting, multiple views, versatile camera settings, advanced analytics, and customizable event recordings.

**Secure and Reliable** Access airVision's convenient yet secure user interface through your web browser via HTTPS. HTTPS encrypts and decrypts user page requests and pages that are returned by the Web server.

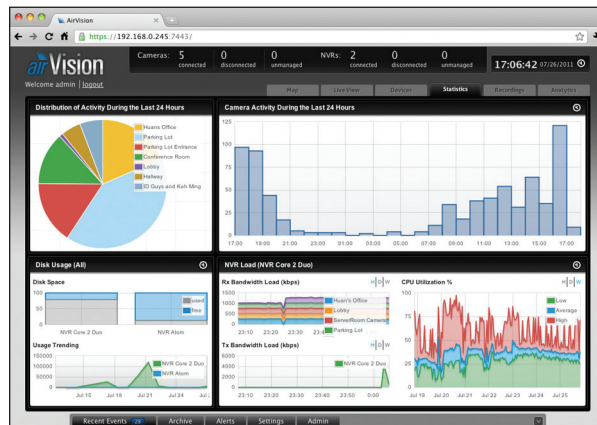
**Cost-Effective Solution** Shattering conventional industry thinking, Ubiquiti offers AirVision's powerful IP surveillance system completely free of charge. No huge upfront costs, no monthly subscription fees.

**Breakthrough Price/ Performance IP Camera Product Line** The AirCam line of H.264 megapixel cameras combine advanced industrial design and powerful performance.



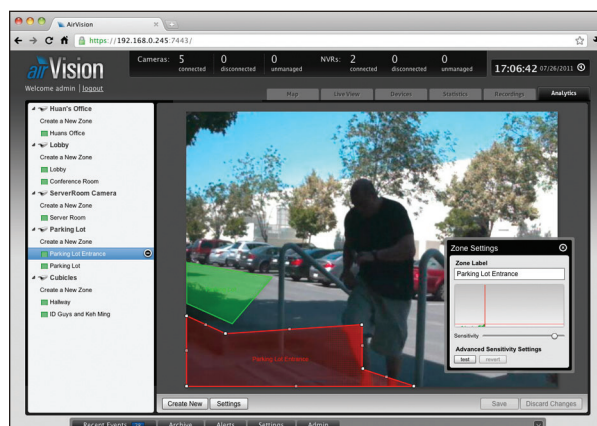
### Event Recordings

AirVision gives you a variety of options and settings to customize what your cameras record.



### Detailed Statistical Reporting

Quickly assess important camera activity and NVR performance with easy-to-read visualized graphs.



### Advanced Analytics

Customize your own motion detection zones. You can place several zones and set their alarm sensitivities as high or low as the situation demands.

# Specifications

airCam Specifications	
Dimensions	158 x 61.5 x 58.5 mm (without mounting arm) 264 x 61.5 x 58.5 mm (with mounting arm)
Weight	240 g (196 g without mounting arm)
Ports	(1) 10/100 Ethernet
Sensor	Progressive Scan RGB CMOS ¼"
Lens	4.0mm/ F1.5
Horizontal of View	47°
Ethernet Ports	Auto MDIX, autosensing 10/100 Mbps
Power LED	Orange
Link/Active LED	Green
Buttons	Factory Reset Button
Power Method	Passive Power over Ethernet (12-24V)
Power Supply	24V/0.5A PoE Adapter included
Maximum Power Consumption	2.4 Watts
Certifications	CE, FCC, IC
Mounting	Wall/Ceiling Adapter Kit included
Operating Temperature	-40 to 70° C (-40 to 158° F)
Operating Humidity	20 - 80% Noncondensing

Video	
Video Compression	H.264
Resolution	1MP/HDTV 720p
Maximum Frame Rate	30 FPS
Image Setting	Brightness, Contrast, Sharpness, Saturation, 50Hz/60Hz

General	
Processor	ARM-based 32-bit RISC
Memory	128MB DDR2 SDRAM, 8MB Flash
Connector	RJ-45 10BASE-T/100BASE-TX PoE
Maximum Active Array Size	1280x800
View Angle	47° (H) 31° (V) 54° (D)

Network	
Security	Multiple user access levels with password protection, User access log
Supported Protocols	IPv4/v6, HTTP, UPnP, DNS, NTP, RTSP, DHCP, TCP, UDP, IGMP, RTCP, ICMP, ARP



# Specifications

airCam Dome Specifications	
Dimensions	100 x 94 mm (length x diameter)
Weight	179.66 g
Ports	(1) 10/100 Ethernet, Micro SD Card Slot
Sensor	Progressive Scan RGB CMOS 1/4"
Lens	4.0mm/F1.5
Horizontal of View	47°
Power LED	Orange
Link/Active LED	Green
Buttons	Factory Reset Button
Power Method	Passive Power over Ethernet (12-24V)
Power Supply	24V/0.5A PoE Adapter included
Maximum Power Consumption	3.5 Watts
Certifications	CE, FCC, IC
Mounting	Ceiling Mount
Operating Temperature	0 to 40° C (32 to 104° F)
Operating Humidity	20 - 80% Noncondensing

Video	
Video Compression	H.264
Resolution	1MP/HDTV 720p
Maximum Frame Rate	30 FPS
Image Setting	Brightness, Contrast, Sharpness, Saturation, Mirror, Flip, 50Hz/60Hz

Audio	
Built-In Microphone	ECM (Omni.); Sensitivity=-42±3dB ; S/N=60dBA

General	
Processor	ARM-based 32-bit RISC
Memory	128MB DDR2 SDRAM, 8MB Flash
Local Storage	Micro SD Card Slot (card not included)
Maximum Active Array Size	1280x800
View Angle	47° (H) 31° (V) 54° (D)

Network	
Security	Multiple user access levels with password protection, User access log
Supported Protocols	IPv4/v6, HTTP, UPnP, DNS, NTP, RTSP, DHCP, TCP, UDP, IGMP, RTP, ICMP, ARP



# Specifications

## airCam Mini Specifications

Dimensions	550 x 550 x 1220 mm
Weight	166 g
Ports	(1) 10/100 Ethernet, Micro SD card slot
Sensor	Progressive Scan RGB CMOS ¼"
Lens	3.6mm/ F2.8
Horizontal of View	52°
Ethernet Ports	Auto MDIX, autosensing 10/100 Mbps
Power LED	Orange
Link/Active LED	Green
Buttons	Factory Reset Button
Power Method	Passive Power over Ethernet (12-24V)
Power Supply	24V/0.5A PoE Adapter included
Maximum Power Consumption	3 Watts
Certifications	CE, FCC, IC
Mounting	Desk Mount
Operating Temperature	0 to 40° C (32 to 104° F)
Operating Humidity	20 - 80% Noncondensing

## Video

Video Compression	H.264
Resolution	1MP/HDTV 720p
Maximum Frame Rate	30 FPS
Image Setting	Brightness, Contrast, Sharpness, Saturation, Mirror, Flip, 50Hz/60Hz

## Audio

Microphone	ECM (Omni.); Sensitivity=-42±3dB ; S/N=60dBA
------------	--

## General

Processor	ARM-based 32-bit RISC
Memory	128MB DDR2 SDRAM, 8MB Flash
Local Storage	Micro SD Card Slot (Card not included)
Maximum Active Array Size	1280x800
View Angle	52° (H) 34° (V) 59° (D)

## Network

Security	Multiple user access levels with password protection, User access log
Supported Protocols	IPv4/v6, HTTP, UPnP, DNS, NTP, RTSP, DHCP, TCP, UDP, IGMP, RTCP, ICMP, ARP





# TOUGH Cable

OUTDOOR CARRIER CLASS SHIELDED

Protect your networks from the most brutal environments with Ubiquiti's industrial-grade shielded Ethernet cable, TOUGH Cable.

**Increase Performance** Dramatically improve your Ethernet link states, speeds, and overall performance with Ubiquiti TOUGH Cables.

**Extreme Weatherproof** TOUGH Cables have been built to perform even in the harshest weather and environments.

**ESD Damage Protection** Protect your networks from devastating electrostatic discharge (ESD) attacks.

**Extended Cable Support** TOUGH Cables have been developed to have increased power handling performance for extended cable run lengths.

## Bulletproof your networks

TOUGH Cable is currently available in two versions: Level 1 Shielding Protection and Level 2 Shielding Protection.

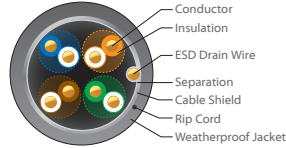
**Level 1** is a Category 5e outdoor carrier-class shielded cable.

**Level 2** is a Category 5e outdoor carrier-class shielded cable that features an Anti-Crosstalk Divider, additional shielding and is rated to provide optimal performance on Gigabit Ethernet networks.

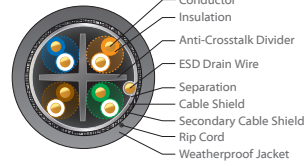
### Additional Information:

- 24 AWG copper conductor pairs
- 26 AWG integrated ESD drain wire to prevent ESD attacks & damage
- PE outdoor-rated weatherproof jacket
- Multi-layered shielding
- Available in 1000 ft (304.8 m) length

### LEVEL 1 SHIELDING PROTECTION



### LEVEL 2 SHIELDING PROTECTION

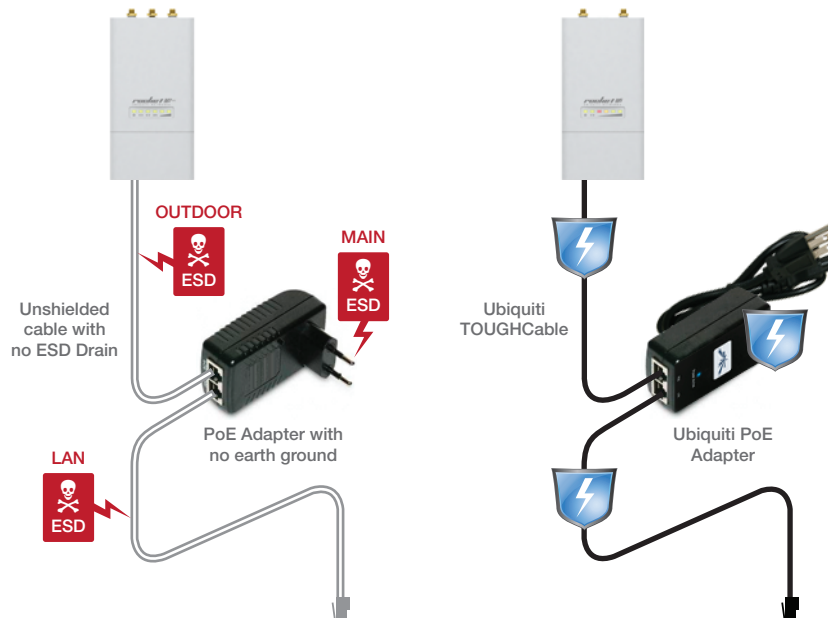


## TOUGH Cable Connectors

Specifically designed for use with Ubiquiti TOUGH Cables and available in 100 pc. bags, TOUGH Cable Connectors protect against ESD attacks and Ethernet hardware damage while allowing rapid field deployment without soldering.

ESD attacks are overwhelmingly the leading cause for device failures. The diagram below illustrates the areas vulnerable to ESD Attacks in a defenseless network.

Use a grounded Ubiquiti Power over Ethernet (PoE) adapter along with Ubiquiti TOUGH Cable and TOUGH Cable Connectors to effectively protect against ESD attacks.





TERMS OF USE: Shielded Ethernet cable and earth grounding must be used as conditions of product warranty.

For further information, please visit [www.ubnt.com](http://www.ubnt.com).

All specifications in this document are subject to change without notice.

© 2011 Ubiquiti Networks, Inc. All rights reserved

RR100311

 [www.ubnt.com](http://www.ubnt.com)